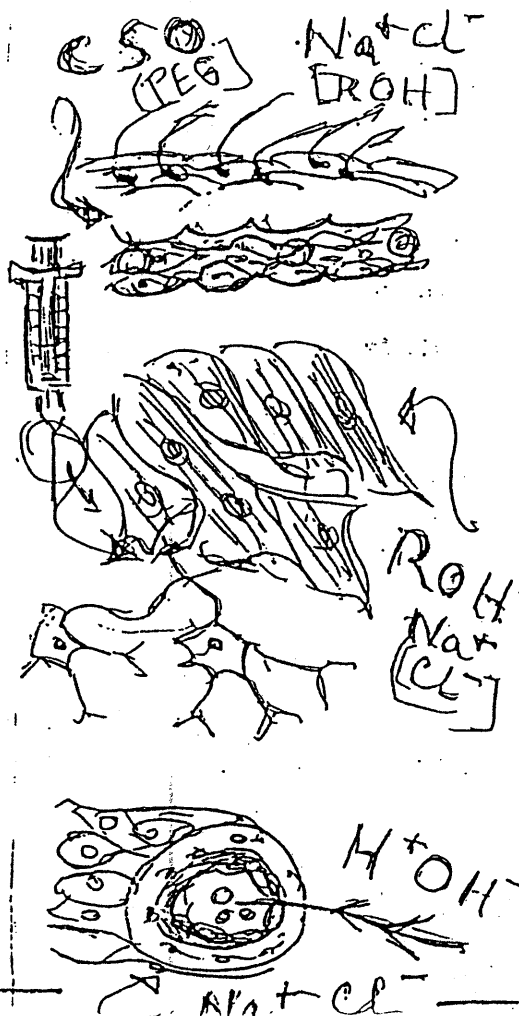


CLASS	SALINE		ALC. SAL.		PEG 400		CSO	
	MOUSE	RAB IC	MOUSE	RAB IC	MOUSE	RAB IC	MOUSE	RAB IC
1	X	X						
2	X	X	X	X				
3	X	X	X	X	X			X
4 *	X	X	X	X			X	X
5	X	X	X	X	X	X	X	X
6 *	X	X	X	X	X	X	X	X

SOLUTE-SOLVENT INTERACTIONS

INJECTION/IMPLANTATION ASSAYS

* also intramuscular
 implant, 4 strips per
 rabbit, plus USP reference
 control, 3-7 days gross
 and histopathology



Intracutaneous

Intramuscular
 Interstitial

Intravenous
 Intraperitoneal

Ancillary (Tripartite)
 cell culture
 cytotoxicity
 inhibition
 topical irritation
 contact allergy
 Ames test, DNA repair
 Subchronic

Concept: there is a relationship between solubility of articles and their components, stabilizers, etc (solute) and the leaching or extracting properties of tissues (bio-solvents)